


SD Collet & HM Milling Chuck Contents

BT...SD	SD Collet High Accuracy Chucks	52	
CT...SD			
HSK...SD			
HM	HM Milling Chucks	53	

SD Collet Chuck

Measurement System	Interface	Collet Type	Gage Length
Imperial	CT40	SD-16	80mm
Metric	BT40	SD-16	90mm

HM Milling Chuck

Measurement System	Denoted Milling Chuck Size	Collet OD	Gage Length	Interface
Imperial	HM	32mm	4	CAT40
Metric	HM	32mm	105	BT40

SD Collet Chucks

CAT, BT and HSK styles:

- SD design increases gripping power/torque over the traditional ER collet system with 4° per side angle contact.
- Maximum runout (0.007mm @ 4XD) increases accuracy and tool life while minimizing rework. Consistent repeatability shortens set-up time and improves productivity.
- Off the shelf balance specifications of G6.3 at 20,000 rpm provides confidence in high speed machining applications and high accuracy requirements.
- Durable, case hardened chucks.

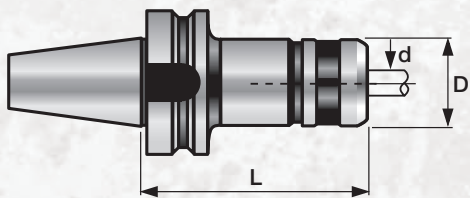
HM Milling Chucks

CAT, BT and HSK styles:

- More efficient & effective roughing operations.
- Exceptional rigidity under side loads.
- Strong chucking torque eliminates cutting tool slip and maximizes gripping power.
- Decreased vibration extends tool life and improves surface finishes for secondary operations.
- Superior concentric positioning improves accuracy and allows closer to net shape machining.
- Very competitively priced.

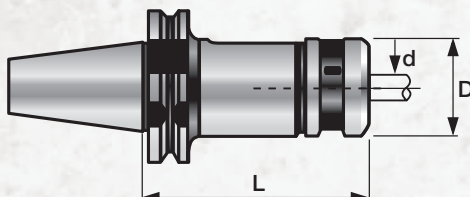


SD Collet Chucks



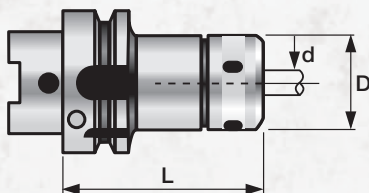
SD Collet Chucks (high accuracy)

Tool Ordering No.	Length L	Diameter D	Clamping Range d	Weight Kg
BT40-SD16-90	3.54 inch	1.6 inch	.098-.630 inch	1.3
BT50-SD16-100	4 inch	1.6 inch	.098-.630 inch	3.2

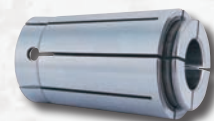


Note: Thread and Pilot are Metric DIN Standard

CT40-SD16-80	3.15 inch	1.6 inch	.098-.630 inch	1.3
CT50-SD16-100	4 inch	1.6 inch	.098-.630 inch	3.2



HSK63A-SD16-80	3.15 inch	1.6 inch	.098-.630 inch	1.1
HSK100A-SD16-100	4 inch	1.6 inch	.098-.630 inch	2.5



SD Collets

Tool Ordering No.	Range d	Tool Ordering No.	Range d	Tool Ordering No.	Range d	Tool Ordering No.	Range d
SD-16-3	.098-.118	SD-16-6.5	.236-.256	SD-16-10	.374-.394	SD-16-13.5	.512-.531
SD-16-3.5	.118-.1375	SD-16-7	.256-.276	SD-16-10.5	.394-.413	SD-16-14	.531-.551
SD-16-4	.1375-.157	SD-16-7.5	.276-.295	SD-16-11	.413-.433	SD-16-14.5	.551-.571
SD-16-4.5	.157-.177	SD-16-8	.295-.315	SD-16-11.5	.433-.453	SD-16-15	.571-.591
SD-16-5	.177-.197	SD-16-8.5	.315-.335	SD-16-12	.453-.472	SD-16-15.5	.591-.610
SD-16-5.5	.197-.217	SD-16-9	.335-.354	SD-16-12.5	.472-.492	SD-16-16	.610-.630
SD-16-6	.217-.236	SD-16-9.5	.354-.374	SD-16-13	.492-.512		



SD Clamping Nut

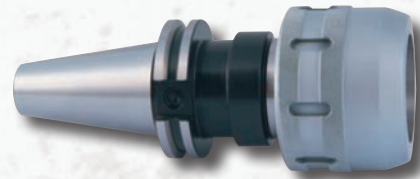
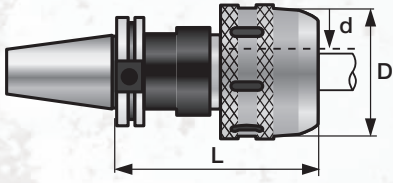
Tool Ordering No.	Length L	Diameter D
SD-16-Nut	24	41



SD Spanner Wrench

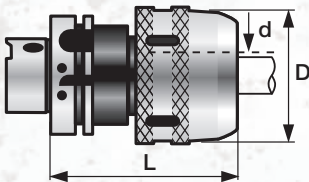
Tool Ordering No.	Length L	Diameter D
SD-S-16	170	41

HM Milling Chucks

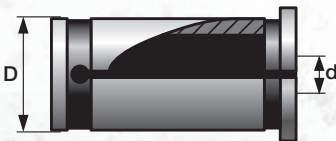


HM Milling Chucks

Tool Ordering No.	Length L	Diameter D	Diameter d	Clamping Range d	Weight Kg	Thread
HM32-4.0-CAT40	4.0 inch	2.89 inch	32mm	0.250-1.00"	2.4	
HM32-4.0-CAT50	4.0 inch	2.89 inch	32mm	0.250-1.00"	4.4	



Tool Ordering No.	Length L	Diameter D	Diameter d	Clamping Range d	Weight Kg
HM32-100-HSK63A	4.0	2.89 inch	32mm	0.250-1.00"	2.1
HM32-100-HSK100A	4.0	2.89 inch	32mm	0.250-1.00"	3.4



HMC Collets

Tool Ordering No.	Diameter D	Diameter d
HMC-32-.250	32mm	0.250
HMC-32-.375	32mm	0.375
HMC-32-.500	32mm	0.500
HMC-32-.625	32mm	0.625
HMC-32-.750	32mm	0.750
HMC-32-1.000	32mm	1.00



HM-S Spanner Wrench

Tool Ordering No.	Length L	Diameter D
HM-S-40	265	70

SD Collet & HM Milling Chuck Contents

BT...SD

SD Collet High Accuracy Chucks

120-121



CT...SD



HSK...SD



HM

HM Milling Chucks

120-121



SD Collet Chuck

Measurement System	Interface	Collet Type	Gage Length
Imperial	CT40	SD-16	80mm
Metric	BT40	SD-16	90mm

HM Milling Chuck

Measurement System	Denoted Milling Chuck Size	Collet OD	Gage Length	Interface
Imperial	HM	32mm	4	CAT40
Metric	HM	32mm	105	BT40

SD Collet Chucks

CAT, BT and HSK styles:

- SD design increases gripping power/torque over the traditional ER collet system with 4° per side angle contact.
- Maximum runout (0.007mm @ 4XD) increases accuracy and tool life while minimizing rework. Consistent repeatability shortens set-up time and improves productivity.
- Off the shelf balance specifications of G6.3 at 20,000 rpm provides confidence in high speed machining applications and high accuracy requirements.
- Durable, case hardened chucks.

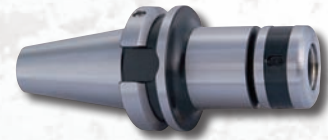
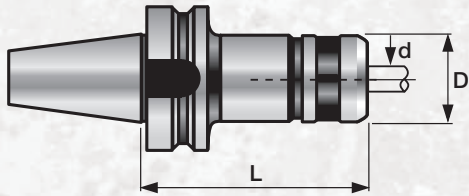
HM Milling Chucks

CAT, BT and HSK styles:

- More efficient & effective roughing operations.
- Exceptional rigidity under side loads.
- Strong chucking torque eliminates cutting tool slip and maximizes gripping power.
- Decreased vibration extends tool life and improves surface finishes for secondary operations.
- Superior concentric positioning improves accuracy and allows closer to net shape machining.
- Very competitively priced.

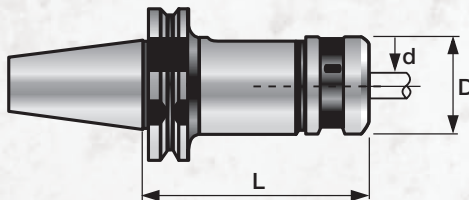


SD Collet Chucks

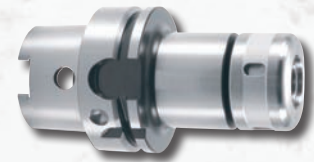
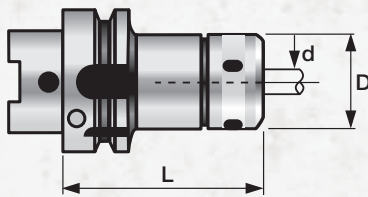


SD Collet Chucks (high accuracy)

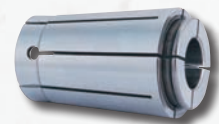
Tool Ordering No.	Length L	Diameter D	Clamping Range d	Weight Kg
BT40-SD16-90	90mm	41mm	2,75-16mm	1,3
BT50-SD16-100	100mm	41mm	2,75-16mm	3,2



CT40-SD16-80	80mm	41mm	2,75-16mm	1,3
CT50-SD16-100	100mm	41mm	2,75-16mm	3,2



HSK63A-SD16-80	80mm	41mm	2,75-16mm	1,1
HSK100A-SD16-100	100mm	41mm	2,75-16mm	2,5



SD Collets

Tool Ordering No.	Range d	Tool Ordering No.	Range d	Tool Ordering No.	Range d	Tool Ordering No.	Range d
SD-16-3	2,5-3,0	SD-16-6,5	6,0-6,5	SD-16-10	9,5-10,0	SD-16-13,5	13,0-13,5
SD-16-3,5	3,0-3,5	SD-16-7	6,5-7,0	SD-16-10,5	10,0-10,5	SD-16-14	13,5-14,0
SD-16-4	3,5-4,0	SD-16-7,5	7,0-7,5	SD-16-11	10,5-11,0	SD-16-14,5	14,0-14,5
SD-16-4,5	4,0-4,5	SD-16-8	7,5-8,0	SD-16-11,5	11,0-11,5	SD-16-15	14,5-15,0
SD-16-5	4,5-5,0	SD-16-8,5	8,0-8,5	SD-16-12	11,5-12,0	SD-16-15,5	15,0-15,5
SD-16-5,5	5,0-5,5	SD-16-9	8,5-9,0	SD-16-12,5	12,0-12,5	SD-16-16	15,5-16,0
SD-16-6	5,5-6,0	SD-16-9,5	9,0-9,5	SD-16-13	12,5-13,0		



SD Clamping Nut

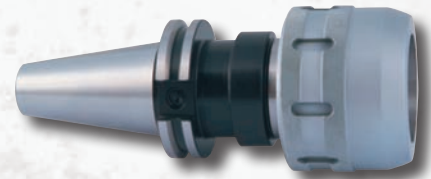
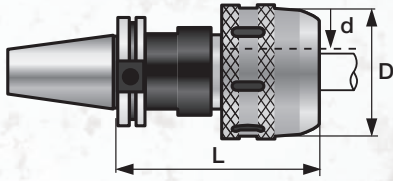
Tool Ordering No.	Length L	Diameter D
SD-16-Nut	24	41



SD Spanner Wrench

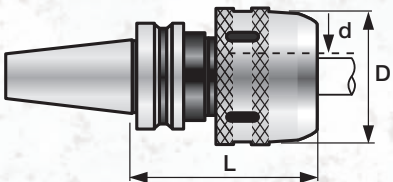
Tool Ordering No.	Length L	Diameter D
SD-S-16	170	41

HM Milling Chucks

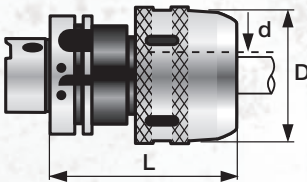


HM Milling Chucks

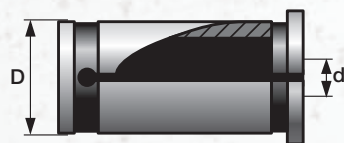
Tool Ordering No.	Length L	Diameter D	Diameter d	Clamping Range d	Weight Kg	Thread
HM32-4.0-CAT40 (DIN)	102mm	73,4mm	32mm	6-32mm*	2,4	
HM32-4.0-CAT50 (DIN)	102mm	73,4mm	32mm	6-32mm*	4,4	



Tool Ordering No.	Length L	Diameter D	Diameter d	Clamping Range d	Weight Kg
HM32-105-BT40	105mm	73,5mm	32mm	6-32mm*	2,4
HM32-105-BT50	105mm	73,5mm	32mm	6-32mm*	5



Tool Ordering No.	Length L	Diameter D	Diameter d	Clamping Range d	Weight Kg
HM32-100-HSK63A	100mm	73,5mm	32mm	6-32mm*	2,1
HM32-100-HSK100A	100mm	73,5mm	32mm	6-32mm*	3,4



HMC Collets

Tool Ordering No.	Diameter D	Diameter d
HMC-32-6	32mm	6
HMC-32-8	32mm	8
HMC-32-10	32mm	10
HMC-32-12	32mm	12
HMC-32-14	32mm	14
HMC-32-16	32mm	16
HMC-32-18	32mm	18
HMC-32-20	32mm	20
HMC-32-25	32mm	25



HM-S Spanner Wrench

Tool Ordering No.	Length L	Diameter D
HM-S-40	265	70